



**InRetreat**  
TRANSFORMATIVE JOURNEYS

*A custom retreat experience*

# KENYA SAFARI



*An exclusive safari  
adventure from  
savannah to sea*



You are invited to join us on an exclusive and unforgettable nature immersion.

We begin in a luxury tented camp on the wild open plains of Laikipia Plateau, teeming with Big 5 wildlife on an acclaimed private conservancy beneath Mount Kenya. From there, we jump on a private plane to the Lamu archipelago and board a beautifully refurbished traditional dhow sailing boat that will glide through the pristine tropical waters of the Indian Ocean. This is the ultimate private, luxurious, and all-inclusive safari retreat, opening your eyes and heart to unforgettable Kenya.



# *Your InRetreat guide*



## Nina Butler

Nina grew up in the South African wilderness roaming barefoot beneath sunny skies, in awe of earth's wonders. She was a high-school drop-out who traded the classroom for a yacht skipper's qualification, and started working on private yachts in the Mediterranean at 16 years old. This was the ultimate 'university of life' that led her into various culinary, viticultural, spiritual and artistic pursuits around the world.

She did eventually navigate back to formal education, and defended a Doctorate in Philosophy in 2015. Soon thereafter, she launched a start-up offering bespoke, multilingual yoga trainings online. This flowered into an in-person yoga travel and adventure experience business, and various consulting opportunities in brand strategy and communication. Nina is currently based in Oslo, Norway.

# Anticipate a journey ...



## ABUNDANT WILDLIFE

Laikipia Plateau is in central Kenya and is a rich and diverse natural treasure, boasting some of Africa's most extraordinary and endangered wildlife and vast, pristine wilderness areas. Set against the backdrop of Mount Kenya, the plateau extends over 9,500 sq km of ever-changing, diverse landscapes - we will enjoy private, guided safari drives here twice daily!

## REFURBISHED DHOW

Lamu archipelago is a rare jewel in the Indian Ocean. It has welcomed travellers for thousands of years as a historic centre for the spice trade. Lamu Town is the oldest living town in East Africa, and is framed by long white sandy beaches, azure waters teeming with marine life and mystical mangrove forests. This is our playground whilst on Tusitiri dhow!



## UNMATCHED EXCLUSIVITY

The two locations on this customised safari are privately owned by a Norwegian family who are passionate about an exceptional level of service, style and access to nature. Both Enasoit (Laikipia Plateau) and Tusitiri (Lamu archipelago) are bookable on an exclusive basis only. They both come fully staffed, including with a private chef and wilderness guides



### YOGA IN THE WILD

Nina will lead an uplifting, soulful and aligned daily yoga class, accessible to all yoga levels. These sessions will be truly 'in nature', with the possibility of game spotting from your mat when at Enasoit! As it is a custom retreat the yoga level, frequency and focus can all be adapted on a day-to-day basis so that you feel entirely relaxed and cared-for!

### OFF-GRID AND SUSTAINABLE

Due to the commitment the Enasoit collection makes to 'leave no trace' and respect the ecosystems of Laikipia and the Lamu archipelago, the maximum number of guests is 7, plus your guide, Nina. Both locations are run completely off solar energy, and focus on providing organic, seasonal and local produce throughout.



### ALL THE DETAILS TAKEN CARE OF

From the moment you touch down at Nairobi airport, until the moment to depart again, every detail of your trip will be taken care of and delivered to the highest standards. You can truly 'unplug' and cultivate presence, soaking up the magnificent landscapes along the way. Every detail of the itinerary is customisable.



# Savannah

## Enasoit tented camp

Enasoit is a private wildlife reserve and permanent camp nestled in the foothills of Mount Kenya. As a small and intimate camp, guests enjoy the facilities and game reserve on a purely exclusive-use basis. Enasoit has unique charm. It is relaxed and welcoming, yet has a luxe feel, resplendent with exotic decor and gorgeous, alluring details. One of the most distinctive features of Enasoit Camp is the extraordinary wildlife activity at the waterhole just in front of the main Mess Tent. In addition, the six tented cottages have a superb vantage point over the waterhole. Each cottage is a private guest suite, complete with a fireplace, lounge, ensuite bathroom, and veranda. Every need is taken care of here, as we retreat and relax. Anticipate farm-to-table cuisine, a library and games room, a massage room, and a swimming pool.



*“Kenya was an absolute adventure of a lifetime and a trip full of moments, people and memories I will cherish forever. I feel so grateful.”*

*~Holly, UK, 2022*

# Sea

## *Tusitiri dhow*

A dhow is a wooden sailing boat originally built for carrying spices and goods along the Indian Ocean trade routes. Tusitiri was handcrafted in this tradition over fifty years ago. She has since been meticulously restored and stylishly reappointed by her current owners. Today, she is a majestic and luxurious vessel for exclusive-use dhow safaris in the Lamu archipelago. There is no other luxury dhow like Tusitiri in all of East Africa! Life on-board is relaxed and rejuvenating, with sumptuous cushioned seating areas and a dining area arranged around the wooden mast. Meals are prepared in the galley, and there are day cabins below to provide storage and ablution facilities. Dinner on-board is magical, as brass lanterns twinkle under the stars, and come bedtime, comfortable white linen-bedrolls are set up on deck. All Tusitiri beds are star-beds!



*"This has to be the best organized tour I have ever been on. The blend of Yoga, healthful eating, and amazing excursions are nothing short of extraordinary."*

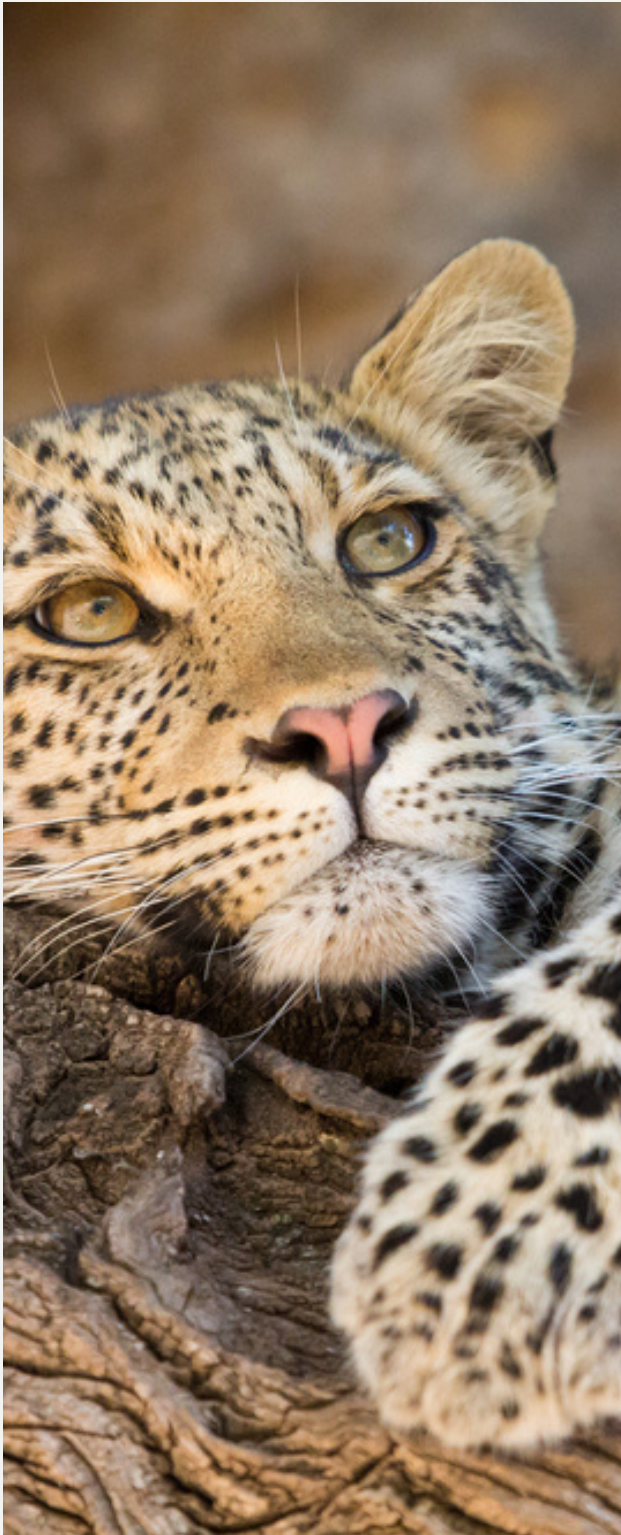
- Vasu, USA, 2022





# *All the retreat details ...*

## Getting there



### ARRIVAL

Fly into Nairobi International Airport (NBO). The safari will begin at approximately 8:30am. Our private van will collect you from your hotel.

It is advised you arrive a day/night prior to the safari start date. We advise you stay at the Karen Gables in Nairobi, which is comfortable taxi distance from the airport.

### DEPARTURE

Our safari ends at the Nairobi International Airport (NBO) in the early afternoon. We will have an air flight that morning from Lamu Island, direct to NBO.

Any additional travel you may desire can be organised, just ask :-)

# Retreat package

## WHAT'S INCLUDED

*This retreat is fully customisable. This is a suggested itinerary:*

- 4 nights luxury accommodation at Enasoit
- 4 nights luxury accommodation at Tusitiri
- 1 night luxury accommodation with The Majlis, Lamu
- All meals & beverages, including alcoholic beverages with The Enasoit Collection
- All yoga classes with Nina Butler
- All excursions, nature activities and entrance fees
- Massage treatments at Enasoit Camp
- All internal transport: all ground transfers; private charter air flight (Enasoit - Lamu); commercial air flight (Lamu - NBO)
- Flying Doctors Emergency Evacuation Cover
- VIP meet and greet service at NBO Nairobi international Airport.

## NOT INCLUDED

- Flights to/from Nairobi International airport
- Visas
- Staff tips
- Travel insurance



# Booking terms



## BOOKING TERMS

- A non-refundable 30% deposit is required to secure your spot.
- The balance payment is due 60 days prior to start date.
- If there is an unforeseen circumstance that causes us to postpone the retreat, all payments will be paid forward to new dates, or refunded in a voucher.
- It is strongly advised that you take out travel insurance.



*This is the ultimate private, luxurious, and all-inclusive safari retreat*

[CLICK HERE TO BOOK](#)





CONTACT US

[nina@inretreat.co](mailto:nina@inretreat.co)

+4792206221

[inretreat.co](http://inretreat.co)